

# FIRE DOOR LEAVES

## Double-acting fire door leaves 1hr & 2hr

### DESCRIPTION

Timber Fire door leaves utilising the latest Pyropanel fire resistant door core and design technology, these doors are fully tested and certified to AS1530.4 and AS1905.1, and have the benefit of a double-action swinging mechanism.

### APPLICATIONS

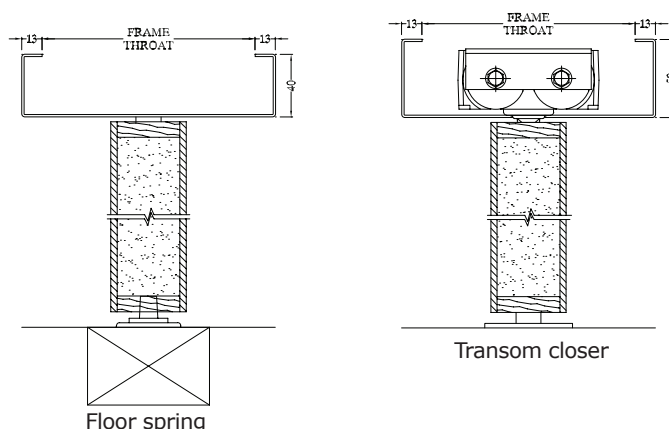
Ideal for heavy traffic areas where two-way swing is an important function, and where fire resistance of up to 2 hours is required. Typical installations include hospitals, public buildings, corridors, nursing homes, schools, etc.

### FEATURES

- For use in 1hr and 2hr plasterboard stud walls, fire rated masonry walls, Hebel masonry walls and Concrete walls. Refer to Pyropanel if your wall type is not listed.
- Available in singles or pairs.
- 48mm (nom) thickness.
- Fully tested and certified up to and FRL of -/120/60#.
- Special vertical edges incorporating extruded aluminium section with integrated intumescent smoke seals.
- Suitable for Pyropanel packed steel door frames designed specifically for double acting doors, available in flat faced or concave (please specify desired finish).
- Frame packed with Pyropanel light-weight M4 Mortar, Mortar, or F/R plasterboard.
- Plywood, MDF or Harboard facing options.
- Can be fitted with either floor springs or transom closers.

### OPTIONAL EXTRAS

- Veneer, steel, aluminium, PVC or laminate facings
- Vision panels up to 300 x 200 or 600 x 100mm nom.
- Kick Panels of Stainless Steel or Acrovyn 4000 to selected height.
- Other testing standards are approved - refer Pyropanel for more information.



Typical head and floor section detail

### MODELS AVAILABLE

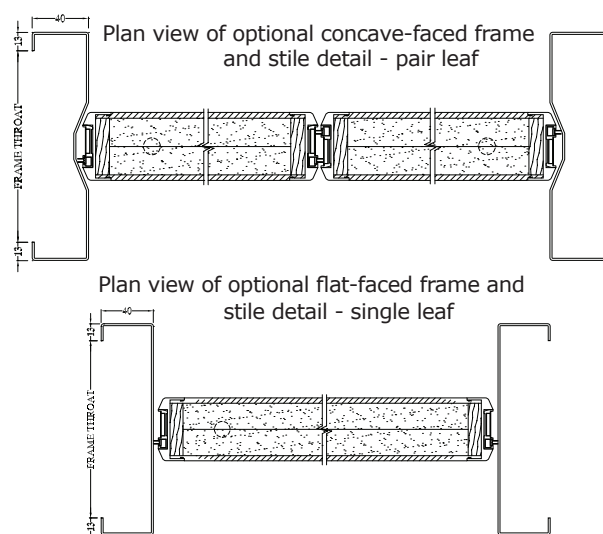
Model	FRL	Thickness	Max Leaf size - Single	Max Leaf size - Pair
PDAFD060-48	-/60/60#	48	2650 x 1075 or 2400 x 1200	2650 x 1075/1075 or 2400 x 1200/1200
PDAFD120-48	-/120/60#	48	2650 x 1075 or 2400 x 1200	2650 x 1075/1075 or 2400 x 1200/1200

# Maximum Insulation rating shown for masonry or concrete walls and with frame packed with Pyropanel M4 mortar. F/R Plasterboard wall applications have the standard 30 minute Insulation rating.

### HOW TO SPECIFY

Eg, "Door to be a Pyropanel PDAFD060\*-48 Double-Acting Fire Rated Doorset, 48mm nom. thick, -/60/30\* FRL, Plywood face\*, mounted in special packed Pyropanel steel Door Frame with flat\* / concave\* finish, with the following options: (e.g. vision panels, kick panels, etc\*).

\* denotes example - delete, change or specify as required



Plan view of optional flat-faced frame and stile detail - single leaf

**Pyropanel Developments Pty Ltd**  
 235 Huntingdale Rd, Oakleigh, Vic 3166  
 Ph: (03) 9837 8500 Fax: (03) 9837 8550  
 Email: [sales@pyropanel.com.au](mailto:sales@pyropanel.com.au)  
 Web: [www.pyropanel.com.au](http://www.pyropanel.com.au)

**Distributed by:**  
**Nexdor Systems**  
 Ph: (03) 5450 3457  
 Email: [estimating@nexdorsystems.com.au](mailto:estimating@nexdorsystems.com.au)  
 Web: [www.nexdorsystems.com.au](http://www.nexdorsystems.com.au)

